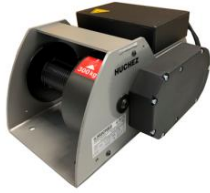


## AGON 300 kg



300 kg electric winch. Model with low voltage control.

Use:

- Handling basketball blackboard and other retractable sport equipment.
- Occasional use.
- Handling room partition.
- Handling billboards (publicity...).

Made in France. Comply with the Directive Machines 2006/42/EC and the norm NF EN 14492-2.

### Technical properties

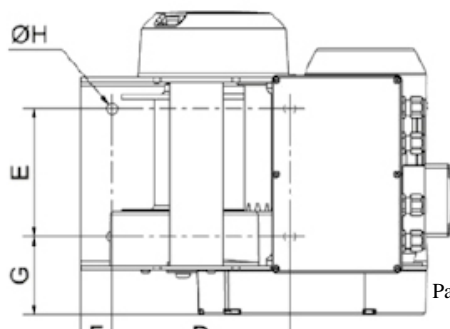
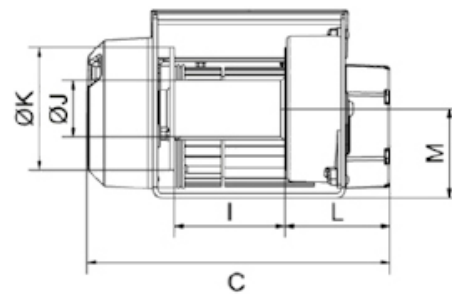
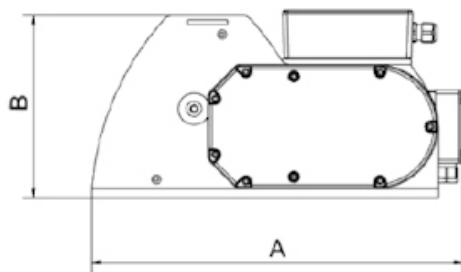
- Mechanical parts machined and protected by cathodolysis.
- The low voltage control protects the user from electrical risks.
- Reducer in oil bath with helical gear.
- Reduction system fully protected by a metal or plastic cover providing maximum safety.
- Same attachment as the MANIBOX GR300 in order to facilitate its replacement.
- Single phase 230 V motor brake with permanent capacitor - 50 Hz lifting type. Class F. IP54 Protection.
- Motor power adapted to all uses, even domestic use.
- Up-down control unit emergency stop, 20 m pendant control. Plug and play, wall mounted and key locking.
- Clock limit switch device easy to set, made especially by HUCHEZ. As standard.
- Complementary equipments available: articulated diverting pulley with support plate (ref. PA), fixed diverting pulley with support plate (ref. PF), complete wire rope kit with timble loop and hook (10, 15, 20 or 35 m), fall arrester (ref. CHL-L), consult us.

## Technical characteristics of AGON 300 kg

Capacity 1st layer kg	300
Capacity top layer kg	300
Nb of layers	3
Wire rope cap. 1st layer m	4
Max. rope capacity m	16
Wire rope Ø mm	5
Fixed speed 1st layer m/min	4,6
Fixed speed top layer m/min	5,9
FEM	1Dm
Motor kW	0,37
Power	1Ph-230V
Weight (without wire rope) kg	29

## Dimensions

A mm	424
B mm	216
C mm	341
D mm	Ø 63,5
E mm	Ø 13
F mm	144
G mm	200



## Technical characteristics of the other models of the range

References	AGON300
Capacity 1st layer kg	300
Capacity top layer kg	300
Nb of layers	3
Wire rope cap. 1st layer m	4
Max. rope capacity m	16
Wire rope Ø mm	5
Fixed speed 1st layer m/min	4,6
Fixed speed top layer m/min	5,9
FEM	1Dm
Motor kW	0,37
Power	1Ph-230V
Weight (without wire rope) kg	29



### HUCHEZ's advice

Motorised lifting equipment for sport and cultural facilities designed according to the Directive Machines 2006/42/EC and the norm NF EN 14492-2.



HUCHEZ  
4, rue Michel HAMMID  
60420 FERRIERES – France  
☎ +33 (0) 3 44 51 11 33  
🌐 [www.huchez.com](http://www.huchez.com)  
✉ [contact@huchez.fr](mailto:contact@huchez.fr)



SERVICE CLIENTS  
ATENCIO AL CLIENTE  
KUNDENSERVICE



Pour en savoir plus, n'hésitez pas à nous contacter!  
To know more, please contact us!  
Para más información, póngase en contacto con nosotros!  
Für weitere Informationen können Sie sich gerne an uns wenden!