

## ERSATZTEILE

Pièces de rechange - Onderdelen - Reservedele - Varaosat - Pezzi di ricambio  
Reservedelen - Peças - Reservdelar - Piezas de recambio

## SPARE PARTS

## STROMLAUFPLÄNE

Schéma de connexions - Stroomschema - Kredslobsdiagrammer - Kytentäkaavio  
Aansluitschema - Schema elettrico - Koplingskjema - Esquema electrico - Elschema  
Esquema eléctrico

## CIRCUIT DIAGRAMS

### GIS CHAIN HOIST

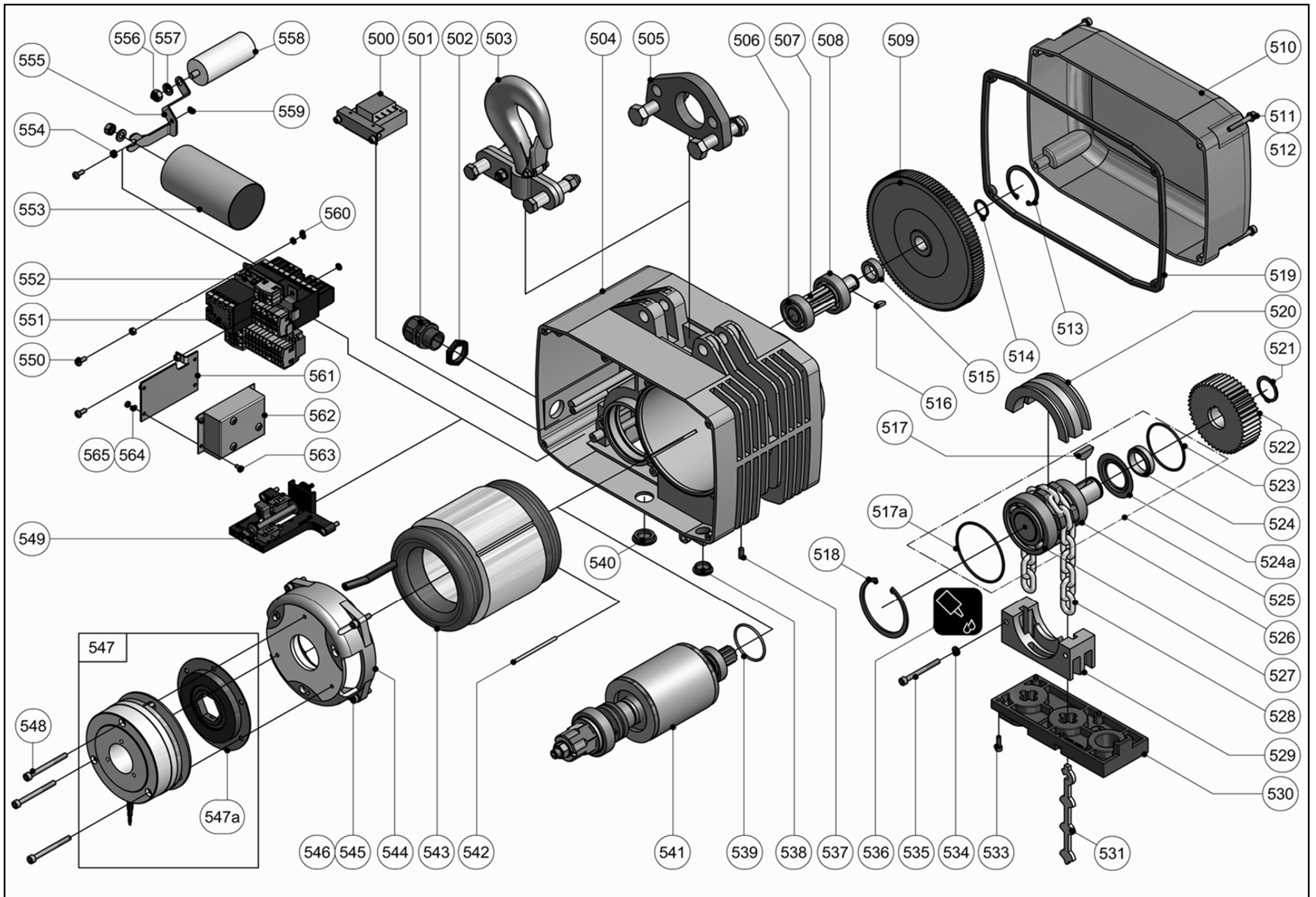
 SWISS QUALITY

**GCH 1000**



M A D E I N S W I T Z E R L A N D





		GCH 1000
500	115/42V 50/60Hz	9056.4516.4
	230/42V 50/60Hz	9056.4500.4
	400/42V 50/60Hz	9056.4501.4
501	M25 x 1.5	9055.3103
502	M25 x 1.5	9055.4013
503	137 x 174	9405.3051.3
504	321 x 283 x 213.5	9405.3000.0
505	86/15 x 137	9405.3039.4
506	6204, 20/47 x 14	9038.0018
507	ø30.55 x 107.5	9405.3025.3
508	6304, 20/52 x 15	9038.0021
509	ø191 z=129	9405.3022.3
510	321 x 214 x 91	9405.3001.2
511	M6 x 40, In-6kt	9030.0279
512	M6, Polyamid	9031.3704
513	I 52 x 2	9031.2206
514	A 20 x 1.2	0031.1013
515	30/4.5 x 9.5	9400.3029.4
516	5 x 7.5 x 18.57	9036.0605
517	8 x 11 x 27.35	9036.0602
517a	ø80 x 2.5	9035.0025
518	I 80 x 2.5	0031.1132
519	323 x 216 x 6	9405.3002.3
520	108 x 54 x 44	9405.3011.3
521	A 30 x 1.5	0031.1018
522	ø99.55 z=46	9405.3023.4
523	ø62 x 2.5	9035.0016
524	ø40/30.5 x 9.5	9405.3032.4
524a	6206 ZJV, 36.3/62 x 2.5	9038.3201
525	ø79 x 124.5, 5T	9405.3305.4
526	6206-2DVH, 30/62 x 16	0038.1149
527	6208-2RS1, 40/80 x 18	0038.1151
528	7 x 22	9039.0007
529	121 x 50 x 44	9405.3012.3
530	80/22 x 200	9405.3020.3
531	236 x 23 x 5 (7 mm)	9041.6022
533	M5 x 20	9030.0321
534	M6	9031.3903
535	M6 x 70	9030.0283

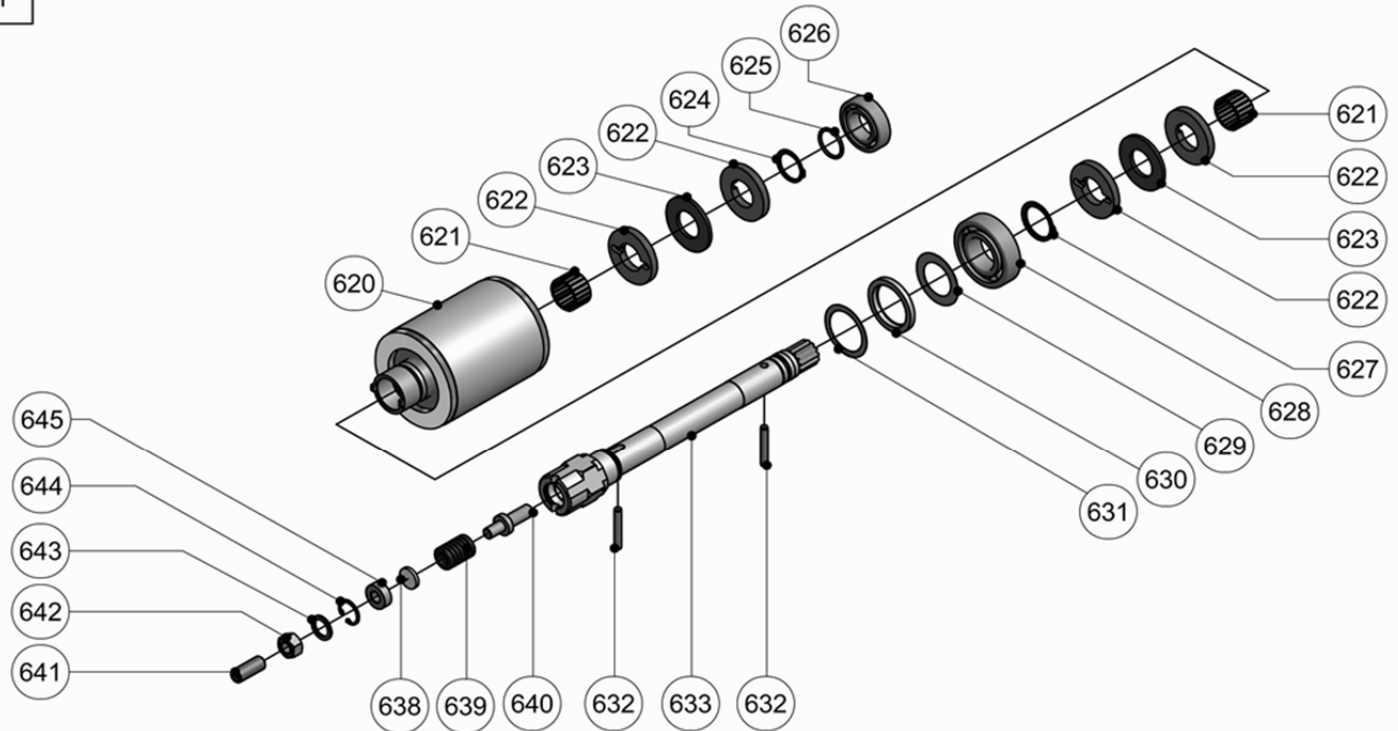
		GCH 1000
536	0.25 l	9041.0007
537	DIN 916 M6 x 16	9030.2013
538	M20 x 1.5	9055.3512
539	ø47 x 2.5	9035.0015
540	M25 x 1.5	9055.3513
541	1-t ø89.4 x 60, 8 m/min	9405.3239.3
	2-t ø89.2 x 100, 8/2 m/min	9405.3240.3
	2-t ø79.2 x 130, 16/4 m/min	9405.3241.3
	1-t ø89.4 x 80, 8 m/min, 1Ph	9405.3242.3
	1-t ø102.4 x 130, 4 m/min, 1Ph	9405.3243.3
542	ø4 x 75	9230.3097.4
543	L=60, 3Ph 230/400V 50Hz, -N	9407.0250.3
	L=100, 3Ph 230V 50Hz, -NF	9407.0502.3
	L=100, 3Ph 400V 50Hz, -NF	9407.0500.3
	L=130, 3Ph 230V 50Hz, -SF	9407.0402.3
	L=130, 3Ph 400V 50Hz, -SF	9407.0400.3
	L=80, 1Ph 115/230V 50Hz, -N	9407.0050.3
	L=130, 1Ph 115/230V 50Hz, -NL	9407.0070.3
544	ø156 x 52.5	9405.3232.2
545	M6 x 25	9030.0276
546	M6	9031.3903
547	20 Nm 100-125 VAC	9050.4062
	20 Nm 200-240 VAC	9050.4063
	20 Nm 360-420 VAC	9050.4064
	20 Nm 440-480 VAC	9050.4065
	20 Nm 500-575 VAC	9050.4066
	20 Nm 690 VAC	9050.4067
547a	ø128 x 11.8	9405.3286.4
548	M6 x 60/24	9030.0282
549	119 x 103.5, kompl.	9401.3015.3
	119 x 103.5, NA kompl.	9401.3018.3
550	M5 x 12	0030.3468
	M5 x 25, 1Ph	0030.1719
551	1-t NA 100-480/42V	9402.1550.2
	1-t NA 500-690/42V UL	9402.1551.2
	2-t NA 100-480/42V	9402.1650.2
	2-t NA 500-690/42V UL	9402.1651.2
	1-t NA 100-230/42V UL, 1Ph	9402.1461.2
552	1.6A	9052.0012

		GCH 1000
553	ø60, 120µF, 1Ph 115V 50/60Hz, -N	9059.0010
	ø60, 160µF, 1Ph 115V 50/60Hz, -NL	9059.0017
	ø45, 40µF, 1Ph 230V 50/60Hz, -N, -NL	9059.0006
554	M5	0031.0036
555	115 x 29 x 2	9405.3272.3
556	M8	0031.0008
557	M8	0031.0578
558	ø37, 320µF, 1Ph 115V 50/60Hz, -N	9059.0011
	ø36.5, 160µF, 1Ph 115V 50/60Hz, -NL	9059.0016
	ø41.5, 80µF, 1Ph 230V 50/60Hz, -N	9059.0013
	ø45, 40µF, 1Ph 230V 50/60Hz, -NL	9059.0006
559	M5	0031.0186
560	M5	9031.3902
561	100 x 60 x 2	9405.3273.4
562	Triac, 1Ph 115V 50/60Hz	9405.3141.4
	Triac, 1Ph 230V 50/60Hz	9405.3222.4
563	M4 x 8	0030.3449
564	M4	0031.0035
565	M4	9031.3901

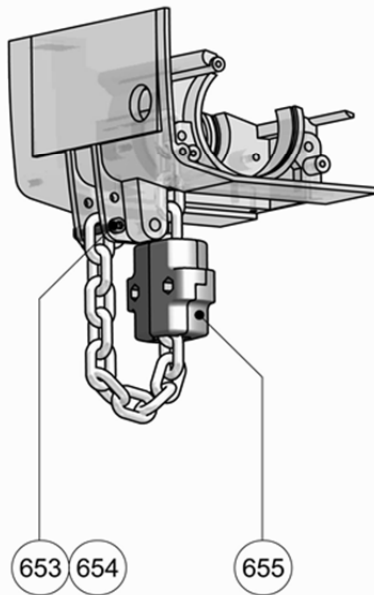
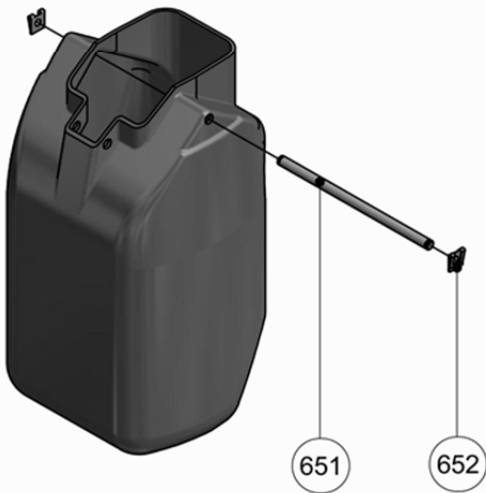
600



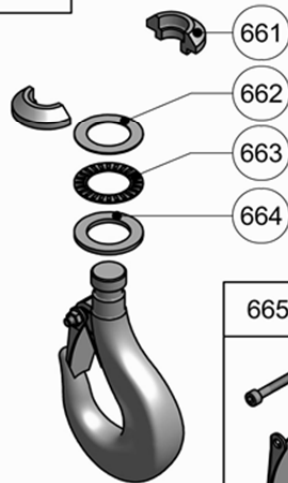
541



650



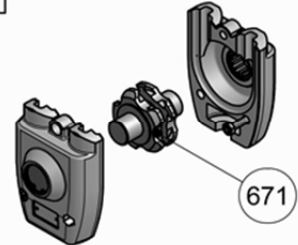
660



666



670



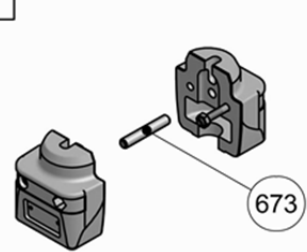
665



667



672



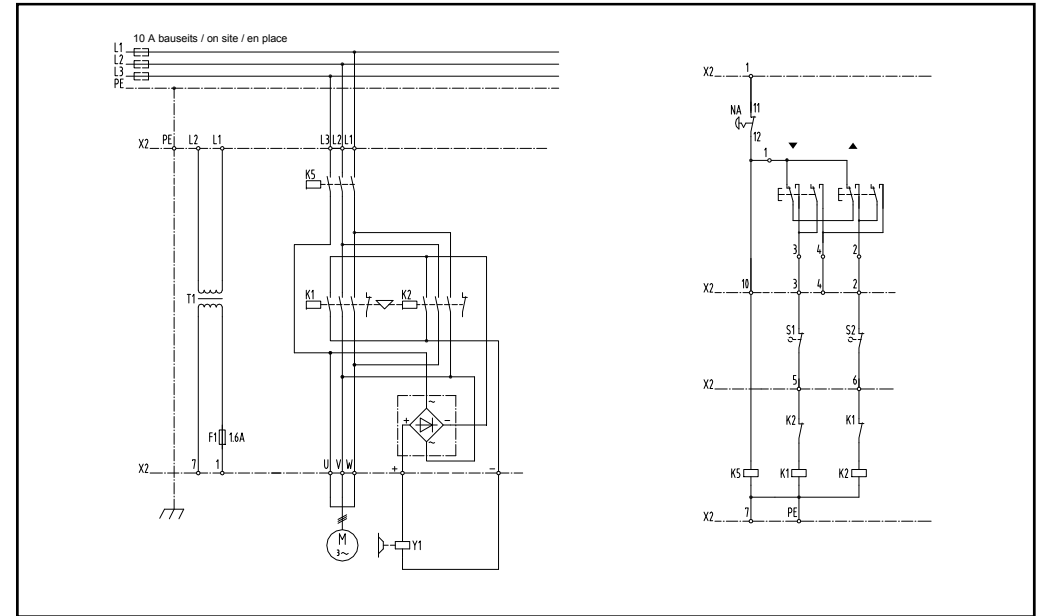


### Elektrokettenzüge - Electric chain hoists - Palans électriques à chaîne

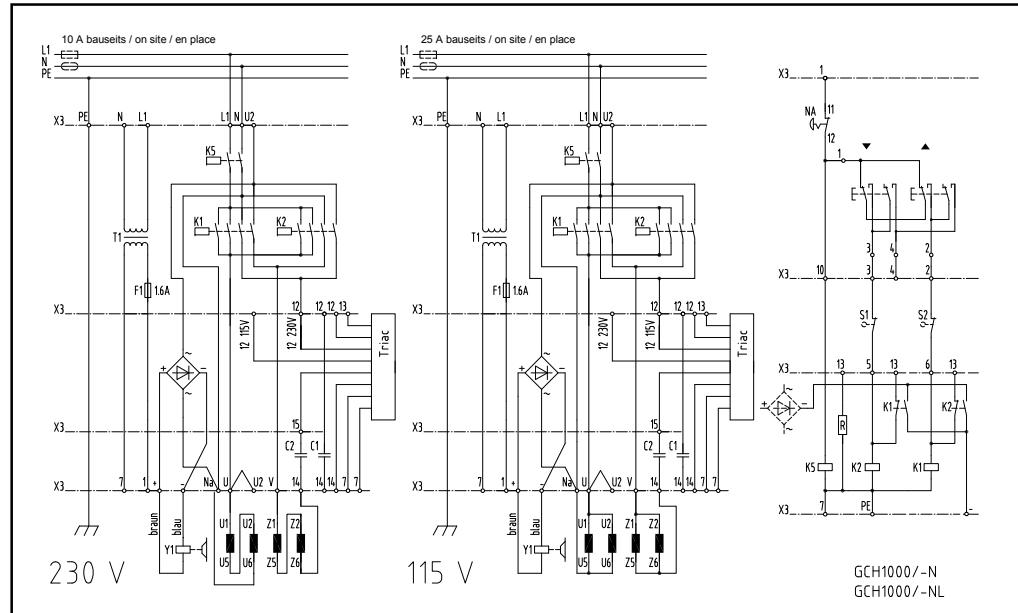
Schützensteuerung Contactor control Commande par contacteurs	1 Geschwindigkeit mit Not-Aus 1 speed with emergency stop 1 vitesse avec marche-arrêt	<b>3 Ph</b>	<b>9402.9500.4</b>
	2 Geschwindigkeiten mit Not-Aus 2 speeds with emergency stop 2 vitesses avec marche-arrêt	<b>3 Ph</b>	<b>9402.9501.4</b>
	1 Geschwindigkeit mit Not-Aus 1 speed with emergency stop 1 vitesse avec marche-arrêt	<b>1 Ph</b>	<b>9402.9531.3</b>

F	Steuersicherung	Control fuse	Fusible de commande
K	Schütz	Contactor	Contacteur
L	Zuleitung	Power supply	Alimentation électrique
N	Nullleiter	Neutral	Neutre
NA	Not-Aus	Emergency stop	Marche-arrêt
PE	Erdung	Earth	Mise à la terre
S	Schalter	Switch	Interrupteur
T	Transformator	Transformator	Transformateur
U, V, W	Motor	Motor	Moteur
X	Klemmenleiste	Terminal strip	Barrette de raccordement
Y	Bremse	Brake	Frein

9402.9500.4 3 Ph



9402.9531.3 1 Ph



9402.9501.4 3 Ph

